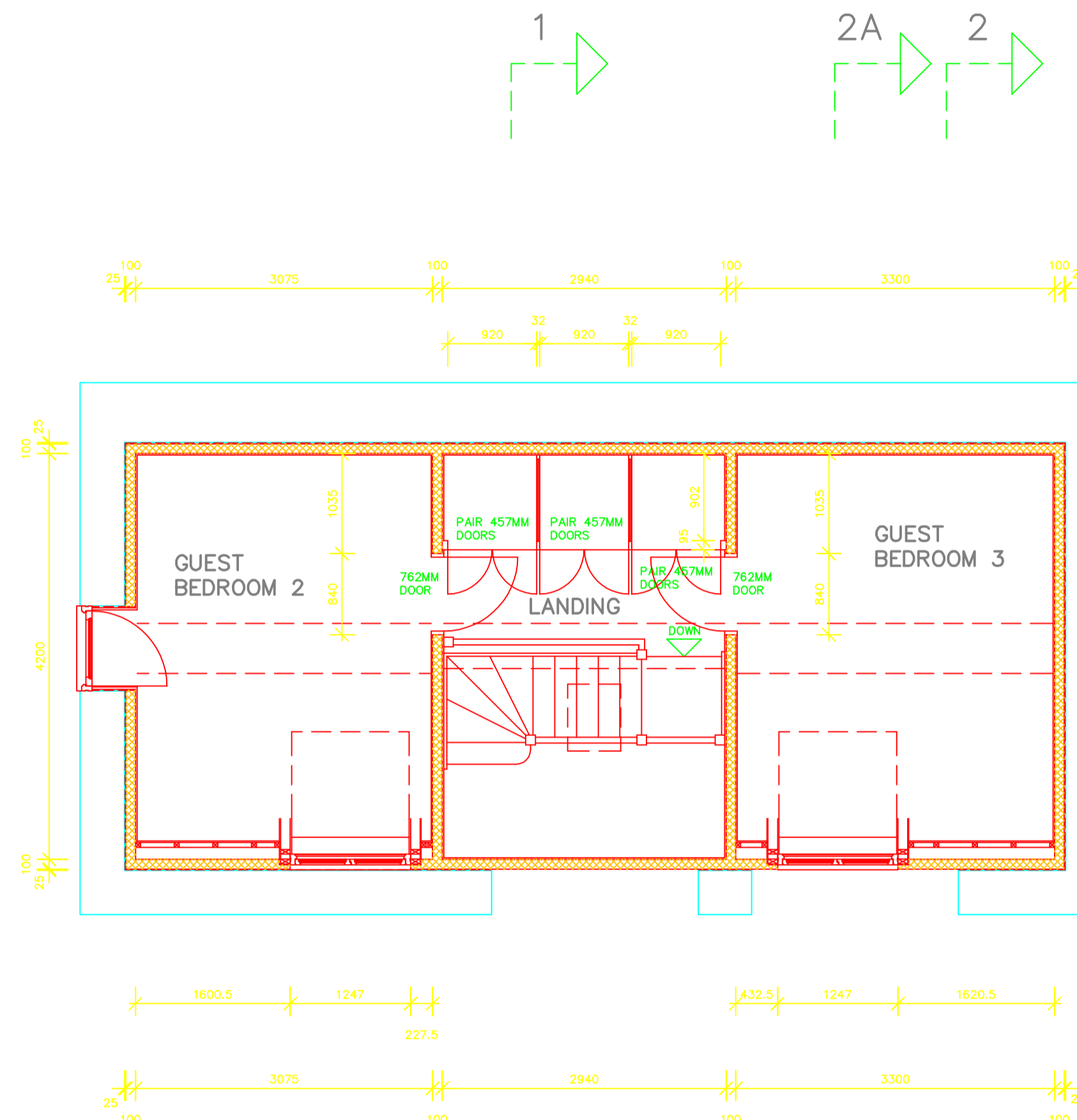
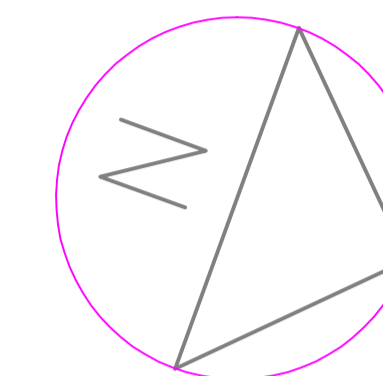


All dimensions must be checked on site and not scaled from this drawing.

Revisions



SHOWER ROOM

EXTRACT VENTILATION TO SHOWER ROOM PROVIDED BY WALL MOUNTED EXTRACT FAN CAPABLE OF EXTRACTION AT MIN. RATE 15 LITRES/SEC OPERATED BY HUMIDISTAT CONTROL. EXTRACT FAN COMPLETE WITH EXTRACT DUCT THROUGH EXTERNAL WALL WITH EXTERNAL GRILLE.

WASTES FORMED USING MUPVC PIPEWORK AND FITTINGS COMPLETE WITH ACCESS PLUGS AS REQUIRED FOR CLEANING.

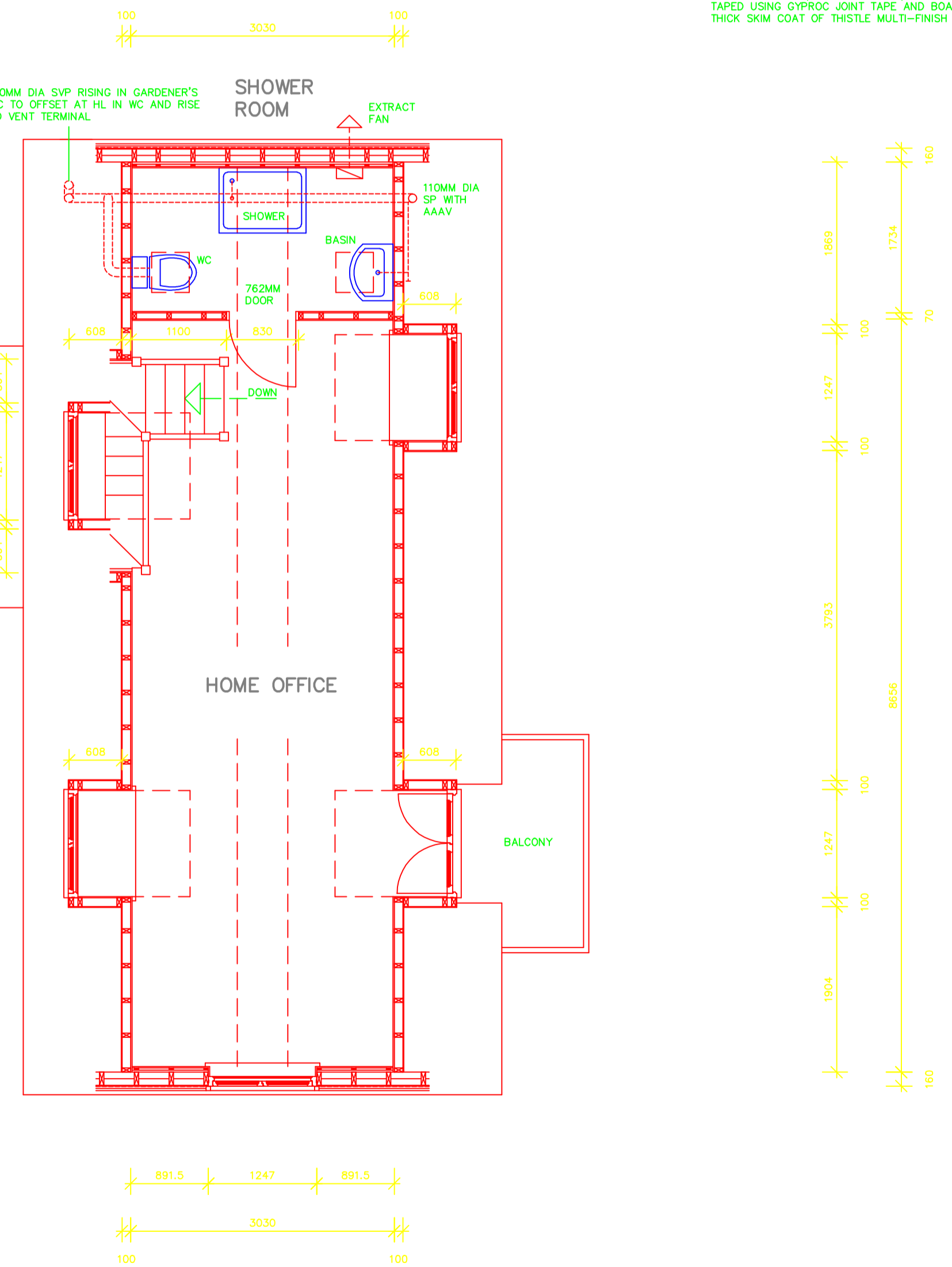
WC WASTE 110MM DIA CONNECTED TO SVP HORIZONTAL BRANCH COMPLETE WITH FAN CONNECTOR AS REQUIRED.
SHOWER WASTE 40MM DIA CONNECTED TO BOSS ON SVP HORIZONTAL BRANCH.
BASIN WASTE 32MM DIA CONNECTED TO BOSS ON SP.

NEW 110MM DIA SVP RISING FROM GARDENER'S WC BELOW COMPLETE WITH BRANCH FOR SVP HORIZONTAL BRANCH INSTALLED WITHIN FIRST FLOOR JOIST VOID. SVP RISING TO FLEXIBLE CONNECTION TO 'THRUVENT' TILE INSTALLED IN ROOF SLOPE.

SVP 110MM DIA HORIZONTAL BRANCH COMPLETE WITH BRANCH TO RECEIVE WC WASTE AND BOSS TO RECEIVE SHOWER WASTE WITH SP RISING IN ROOF SPACE COMPLETE WITH BOSS TO RECEIVE BASIN WASTE AND RISING TO AUTOMATIC AIR ADMITTANCE VALVE.

STUD PARTITIONS

STUD PARTITIONS CONSTRUCTED IN 70 X 50MM REGULARIZED SW WITH SOLE PLATE, HEAD PLATE, VERTICAL STUDS AT MAXIMUM 400MM CTS AND ONE ROW OF HORIZONTAL NOGGIN AT MID-STORY HEIGHT. INSTALL ADDITIONAL NOGGINS AS REQUIRED FOR FIXING OF SANITARY FITTINGS, SHELVING, ELECTRICAL FITTINGS, ETC.
VOID BETWEEN STUD MEMBERS TO BE FILLED WITH ROCKWOOL LTD. OR EQUAL APPROVED, ROCKWOOL ROLLBATT INSULATION TO PROVIDE SOUND INSULATION.
LINE BOTH SIDES OF STUD PARTITIONS WITH 12.5MM THICK GYPROC WALLBOARD FIXED USING GALV PLASTERBOARD NAILS AT MAX. 150MM CTS TO ALL BOARD EDGES AND INTERMEDIATE SUPPORTS. ALL BOARD JOINTS AND WALL/WALL AND WALL/CEILING ANGLES TO BE FILLED AND TAPED USING GYPROC JOINT TAPE AND BOARDS FINISHED WITH 3MM THICK SKIM COAT OF THISTLE MULTI-FINISH PLASTER.



EXTENSION STAIRCASE INFORMATION

STAIRCASE CONSTRUCTED TO COMPLY WITH THE FOLLOWING REQUIREMENTS:
TOTAL RISE OF STAIR FLIGHT = 2505MM TO BE CHECKED ON SITE PRIOR TO FABRICATION.

13No INDIVIDUAL RISERS OF 192.69MM

WIDTH O/A STRINGS OF STAIR FLIGHT = 900MM

GOING OF INDIVIDUAL TREADS = 225MM

2R + G = 610.38MM

PITCH OF STAIR FLIGHT = 40.57 DEG

HANDRAILS TO BE PROVIDED TO BALUSTRADE ONE SIDE OF STAIR FLIGHT AT A HEIGHT OF 900MM MINIMUM MEASURED VERTICALLY ABOVE PITCH LINE OF STAIR FLIGHT TO TOP OF HANDRAIL.

HANDRAILS TO BE PROVIDED TO LANDING BALUSTRADES AT A HEIGHT OF 900MM MINIMUM MEASURED VERTICALLY ABOVE LANDING LEVEL TO TOP OF HANDRAIL.

BALUSTRADES TO STAIR FLIGHT AND LANDING TO BE CAPABLE OF RESISTING A HORIZONTAL FORCE IN ACCORDANCE WITH THE REQUIREMENTS OF BS6399 PART 1.

STAIR FLIGHT AND LANDING BALUSTRADES CONSTRUCTED WITH VERTICAL SPINDLES AT APPROX 100MM SPACING SO AS NOT TO PERMIT THE PASSAGE OF A 100MM DIA SPHERE.

HEADROOM ABOVE STAIR FLIGHT NOT LESS THAN 2000MM MEASURED VERTICALLY ABOVE STAIR FLIGHT PITCH LINE.

STAIR FLIGHTS, NEWEL POSTS AND BALUSTRADES CONSTRUCTED IN FINISHED SEASONED EUROPEAN OAK COMPRISING 25MM THICK FINISHED TREADS WITH ROUNDED NOSINGS, 25MM THICK FINISHED RISERS AND 32MM THICK FINISHED STRINGS WITH ALL MEMBERS HOUSED, GLUED AND SCREWED TOGETHER COMPLETE WITH GLUE BLOCKS TO UNDERSIDE OF TREADS/RISERS.

95 X 95MM FINISHED STAIR FLIGHT AND LANDING NEWEL POSTS WITH STAIR FLIGHT STRINGS MORTICED AND TENONED INTO NEWEL POSTS AND GLUED AND DOWELLED.

LANDING NEWEL POSTS NOTCHED FOR STAIRWELL TRIMMERS AS REQUIRED AND DRILLED, SCREWED AND PELLETED TO STAIRWELL TRIMMERS.

NEWEL POSTS TO RECEIVE SHAPED ENDS WITH SHAPED TIMBER FEATURE TO TOP OF NEWEL POSTS AS SELECTED BY EMPLOYER.

95 X 25MM FINISHED ROUNDED NOSINGS TO EDGE OF FIRST FLOOR DECKING AROUND STAIRWELL WITH NOSING REBATED OVER STAIRWELL TRIMMERS TO FINISH FLUSH WITH FIRST FLOOR DECKING AND NOSINGS PINNED DOWN TO STAIRWELL TRIMMERS.

STAIR FLIGHT AND LANDING BALUSTRADES FORMED WITH SHAPED FINISHED HANDRAILS REBATED TO UNDERSIDE FOR BALUSTERS AND HANDRAILS MORTICED AND TENONED INTO NEWEL POSTS AND GLUED AND DOWELLED. SHAPED FINISHED BALUSTER BASE RAILS REBATED FOR BALUSTERS AND SCREWED TO TOP OF STAIR FLIGHT STRINGS AND LANDING NOSINGS WITH SCREW FIXINGS LOCATED IN REBATE OF BASE RAILS. FINISHED TURNED VERTICAL BALUSTERS AS SELECTED BY EMPLOYER AT MAXIMUM 100MM SPACINGS WITH BALUSTERS SET INTO REBATES IN BASE RAILS AND UNDERSIDE OF HANDRAILS AND FIXED USING REBATE FILLER BLOCKS GLUED AND PINNED.

ALL JOINERY TO BE SANDED ON COMPLETION AND TREATED WITH DANISH OIL FOR INITIAL PROTECTION. FINAL SITE APPLIED FINISH AS SPECIFIED.

EXTG COACH HOUSE STAIRCASE INFORMATION

STAIRCASE CONSTRUCTED TO COMPLY WITH THE FOLLOWING REQUIREMENTS:
TOTAL RISE OF STAIR FLIGHT = 2242MM TO BE CHECKED ON SITE PRIOR TO FABRICATION.

12No INDIVIDUAL RISERS OF 186.83MM

WIDTH O/A STRINGS OF STAIR FLIGHT = 900MM

GOING OF INDIVIDUAL TREADS = 225MM

2R + G = 598.66MM

PITCH OF STAIR FLIGHT = 39.70 DEG

HANDRAILS TO BE PROVIDED TO BALUSTRADE ONE SIDE OF STAIR FLIGHT AT A HEIGHT OF 900MM MINIMUM MEASURED VERTICALLY ABOVE PITCH LINE OF STAIR FLIGHT TO TOP OF HANDRAIL.

HANDRAILS TO BE PROVIDED TO LANDING BALUSTRADES AT A HEIGHT OF 900MM MINIMUM MEASURED VERTICALLY ABOVE LANDING LEVEL TO TOP OF HANDRAIL.

BALUSTRADES TO STAIR FLIGHT AND LANDING TO BE CAPABLE OF RESISTING A HORIZONTAL FORCE IN ACCORDANCE WITH THE REQUIREMENTS OF BS6399 PART 1.

STAIR FLIGHT AND LANDING BALUSTRADES CONSTRUCTED WITH VERTICAL SPINDLES AT APPROX 100MM SPACING SO AS NOT TO PERMIT THE PASSAGE OF A 100MM DIA SPHERE.

HEADROOM ABOVE STAIR FLIGHT NOT LESS THAN 2000MM MEASURED VERTICALLY ABOVE STAIR FLIGHT PITCH LINE.

STAIR FLIGHTS, NEWEL POSTS AND BALUSTRADES CONSTRUCTED IN FINISHED SEASONED EUROPEAN OAK COMPRISING 25MM THICK FINISHED TREADS WITH ROUNDED NOSINGS, 25MM THICK FINISHED RISERS AND 32MM THICK FINISHED STRINGS WITH ALL MEMBERS HOUSED, GLUED AND SCREWED TOGETHER COMPLETE WITH GLUE BLOCKS TO UNDERSIDE OF TREADS/RISERS.

95 X 95MM FINISHED STAIR FLIGHT AND LANDING NEWEL POSTS WITH STAIR FLIGHT STRINGS MORTICED AND TENONED INTO NEWEL POSTS AND GLUED AND DOWELLED.

LANDING NEWEL POSTS NOTCHED FOR STAIRWELL TRIMMERS AS REQUIRED AND DRILLED, SCREWED AND PELLETED TO STAIRWELL TRIMMERS.

NEWEL POSTS TO RECEIVE SHAPED ENDS WITH SHAPED TIMBER FEATURE TO TOP OF NEWEL POSTS AS SELECTED BY EMPLOYER.

95 X 25MM FINISHED ROUNDED NOSINGS TO EDGE OF FIRST FLOOR DECKING AROUND STAIRWELL WITH NOSING REBATED OVER STAIRWELL TRIMMERS TO FINISH FLUSH WITH FIRST FLOOR DECKING AND NOSINGS PINNED DOWN TO STAIRWELL TRIMMERS.

STAIR FLIGHT AND LANDING BALUSTRADES FORMED WITH SHAPED FINISHED HANDRAILS REBATED TO UNDERSIDE FOR BALUSTERS AND HANDRAILS MORTICED AND TENONED INTO NEWEL POSTS AND GLUED AND DOWELLED. SHAPED FINISHED BALUSTER BASE RAILS REBATED FOR BALUSTERS AND SCREWED TO TOP OF STAIR FLIGHT STRINGS AND LANDING NOSINGS WITH SCREW FIXINGS LOCATED IN REBATE OF BASE RAILS. FINISHED TURNED VERTICAL BALUSTERS AS SELECTED BY EMPLOYER AT MAXIMUM 100MM SPACINGS WITH BALUSTERS SET INTO REBATES IN BASE RAILS AND UNDERSIDE OF HANDRAILS AND FIXED USING REBATE FILLER BLOCKS GLUED AND PINNED.

ALL JOINERY TO BE SANDED ON COMPLETION AND TREATED WITH DANISH OIL FOR INITIAL PROTECTION. FINAL SITE APPLIED FINISH AS SPECIFIED.

ATTIC PLAN

Client
MR + MRS GILES.

Project
PROPOSED CONVERSION OF EXISTING COACH HOUSE AND PROPOSED CARPORT AND GARDEN STORE WITH ATTIC HOME OFFICE, 'OLD WYATTS', SEEND, MELKSHAM, WILTSHIRE. SN12 6PR

Drawing Title
WORKING DRAWING. ATTIC PLAN.

Scale	Date	Drawn by
1/50	APRIL 2009	

Tim Weeding Building Design Services
30 Mill Road
Worton
Devizes
Wiltshire SN10 5SP
Telephone & Fax :
(01380) 726903

Project Number	Drawing Number
2008-3	11